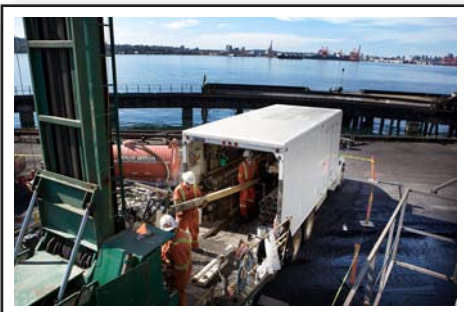


## › Sonic Drilling - Truck



### Sonic Truck

Our truck mounted, full-sized, Roto-Sonic Drill allows quick, mobile access to a variety of locations. This powerful Sonic Drill provides excellent continuous soil core recovery in all overburden soil conditions (silt, sand, gravels, glacial tills) for all environmental and geotechnical programs.

- Height:** 37' (11.3m)  
**Length:** 28' (8.5m)  
**Width:** 8' 6" (2.6m)  
**Weight:** 21,500 kg (47,300 lbs)  
**Equipped:** Rotary safety guards  
SPT Auto-Hammer

- Capable Of:**
- Continuous 4" x 6" Sonic Soil sampling to 150m (500ft)
  - 7" and 8" Core
  - Angle drilling
  - ISO-Flow sampling
  - All geotechnical testing
    - SPT, Shelby, Vane Testing
    - Deploying CPT
- Auxiliary:** Tandem Axle Box Truck for Tooling and Supplies  
- (73,600 kg / 51,920 lbs)



a sonic drilling partnership with



[www.mudbaydrilling.com](http://www.mudbaydrilling.com)

19545 Telegraph Trail / Surrey BC, Canada V4N 4G9 / p. [604] 888.2206 / f. [604] 888.4206