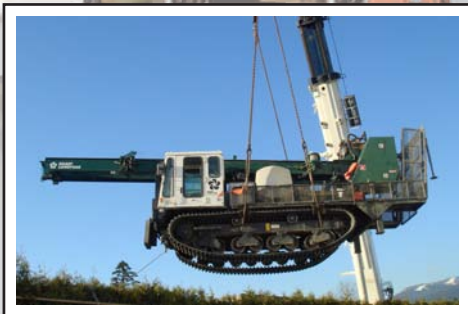


› Sonic Drilling - ATV



Sonic ATV

Our ATV Sonic Drill rig (mounted on a Rubber Tracked IHI carrier) is supported by a twin IHI carrier (tooling and supply storage). It allows access for a full-sized Roto-Sonic Drill to challenging locations. Whether the site is hilly terrain, or soft muskeg, this versatile Sonic Drill can provide the comprehensive soil characterization that only a continuous Sonic soil core supplies.

Height: Mast up 34' (10.4m)
Mast down 11' 7" (3.6m)

Length: Mast up 24' (7.3m)

Width: 8' 6" (2.6m) deck width

Weight: 18,500 kg (40,700 lbs)
500 US gal. water

Grnd Pressure: 5.5 psi

Equipped: Rotary safety guards
SPT Auto-Hammer

Capable Of:

- Continuous 4" x 6" Sonic Soil sampling to 150m (500ft)
- 7" and 8" Core Barrels Available
- Angle drilling
- ISO-Flow sampling
- All geotechnical testing
 - SPT, Shelby, Vane Testing
 - Deploying CPT



a sonic drilling partnership with



www.mudbaydrilling.com

19545 Telegraph Trail / Surrey BC, Canada V4N 4G9 / p. [604] 888.2206 / f. [604] 888.4206